

<http://typogenerator.net/index.php>

VLEs are not just for objects, they are for learning as well!

Kevin Brace, HE Coordinator
[West Midlands RSC](#)

JISC Innovating e-Learning online [conference 2008](#)

Download this presentation from URL:

<http://www.slideshare.net/kevinbrace/VLEs-are-for-learning>

What is a VLE?

- A VLE is:
 - Used to manage the delivery of online learning materials and assessment. Includes curriculum mapping and monitoring of the learner's progress. On completion, updates the student profile with details of activities undertaken. Uses web browser technology. A VLE links to administrative systems, both in-house and external. Ref: <http://excellence.qia.org.uk>
- See also my VLE back to basics PPT: <http://www.slideshare.net/kevinbrace/back-2-basics-what-can-a-vle-do-4-u-presentation>
- More information on Moodle /Vle's at: <http://wiki.rscwmsystems.org.uk/index.php/moodle>




Exemplar 01 – mini Moodle

Week Three

Reflection, Evaluation & Planning

Welcome to this third and final week; please work through the activities below. I will look forward to reading your comments and receiving your feedback 😊

The first activity this week is another chance to experience a collaborative tool. This activity is activity (K) below and makes use of the database tool. Here you must **add one or more entries** to share a favourite website, software tool or gadget.

 (K) Database Demo: Your Recommendations


The **second activity** this week is a quiz (L) as an example of how you can test understanding at the end of a topic or a unit...

 (L) Quick Quiz

The **third activity (M)** this week is to share some comments about your experience with this mini moodle and also a chance to share with others your plans for the future...

 (M) Reflection and Planning

Finally..Please provide feedback about this Mini Moodle course by clicking on the (N) link below... 😊

 (N) Feedback & Evaluation



Exemplar 02 – 5 day conference in 2007

2:00 - 3:00

Death of the VLE - A challenge to a new orthodoxy. Professor Mark Stiles.

Head of Learning Development and Innovation. Staffordshire University.



" The VLE has become almost ubiquitous in both Higher and Further education, with the market becoming increasingly "mature". eLearning is a major plank in both national and institutional strategies. But, is the VLE delivering what is needed in a world where flexibility of learning is paramount, and the life-long learner is becoming a reality? There are indications that rather than resulting in innovation, the use of VLEs has become fixed in an orthodoxy based on traditional educational approaches. The emergence of new services and tools on the web, developments in interoperability and changing demands pose significant issues for institutions' eLearning strategy and policy. Whether the VLE can remain the core of eLearning activity needs to be considered. "

- o Professor Stiles will be present between 2 and 3pm to respond to the forum contributions, however you may post comments and questions before this time if you wish.

- Powerpoint presentation - including presenter notes
- web version - including presenters notes
- PDF version of the presentation
- Leave a question or Comment for Professor Stiles here (2 > 3 pm)

12

Thursday

<http://crusldi1.staffs.ac.uk/bestpracticemodels/>

Thursday 21st - Morning activities

For an audio introduction, click here

10:00 - 11:30

Best Practice Models for eLearning

Helen Walmsley



Exemplar 03 – online workshops


Personal ePortfolios

Friday 2nd November 14:00 - 16:00

In case of problems contact me using the following methods:


tel:  01902 518931 , mobile:  07966 282379 , email k.brace@wlv.ac.uk,

skype 

 **Newbies** >> Navigate around this course using the blue breadcrumb trail (top of window), or by following the hyperlinks in the course outline. If you are new to Moodle please follow these guides as an introduction to this VLE. URLs :

- <http://moodle.coleggwent.ac.uk/course/view.php?id=42&topic=14>
- http://docs.moodle.org/en/Main_Page
- <http://www.humboldt.edu/~moodle/instructor/manual/index.html>

Workshop introduction and rationale

 Introduction (video) & workshop rationale
 News forum

[Video exemplar URL](#)

Outline of workshop

o 2 :00 > 2:20 Topic area 1

Introduce yourself in the general discussion forum, using the "introduction" topic strand. This topic area is also open prior to the workshop.

o 2:20 > 2:30 Topic area 1

Enter the [chat room](#) for a brief live "hello all". (I'll be in the chat from 2pm if there are any problems that require my attention)

o 2:30 > 3:15 Topic area 2

1. Read through the [case studies](#)
2. Access & review any resources

facilitated by

Kevin Brace of I

<http://www.rsc->



tel:  0190

I'm assisted by expert,

Emma Purnell
Wolverhampton



Emma has rece
the CELT to res
eportfolios.

Emma recently
e-tutor award. F
here

Exemplar 04 – 3 day online event

1

16th April Introduction to Copyright



Introductory Activities:

- (1) Join in the Icebreaker forum
- (2) Answer the Copyright Love or Hate? Question

Learning Activities:

- (3) Watch the 'Introduction to Copyright' video
- (4) Read the 'IPR Essentials' paper
- (5) Read the 'IPR Overview' paper
- (6) Do the Copyright Quiz (available after midday)
- (7) Get ready for tomorrow by watching the "A Practical Guide to the Blanket L video
- (8) Participate in the 'Ask The Lawyer' Live Chat at 4pm

Introductory Activities

-  Icebreaker
-  Copyright? Love or Hate?

Learning Activities

-  Introduction to Copyright Video
-  IPR Essentials
-  IPR Overview
-  Introduction to Copyright Quiz
-  A Practical Guide to the Blanket Licences
- Dimdim Web Meeting "Ask the Lawyer" Live Chat
-  Feedback on the webcast video and introductory papers
-  "Ask the lawyer" discussion forum backup

(satire)

Court to hear RealDVD copyright case
11:52AM, Tuesday 7th October 2008 -
PC Pro

Copyright Royalty Board rejects call to
hike download royalties - Out-Law.com

RealDVD shut down in copyright row
with Hollywood - Own It

Apple wins iTunes copyright case -
NME.com

5 minutes)
e

RSS feeds aggregated
from a Google search
to provide fresh
resources on the front
page.

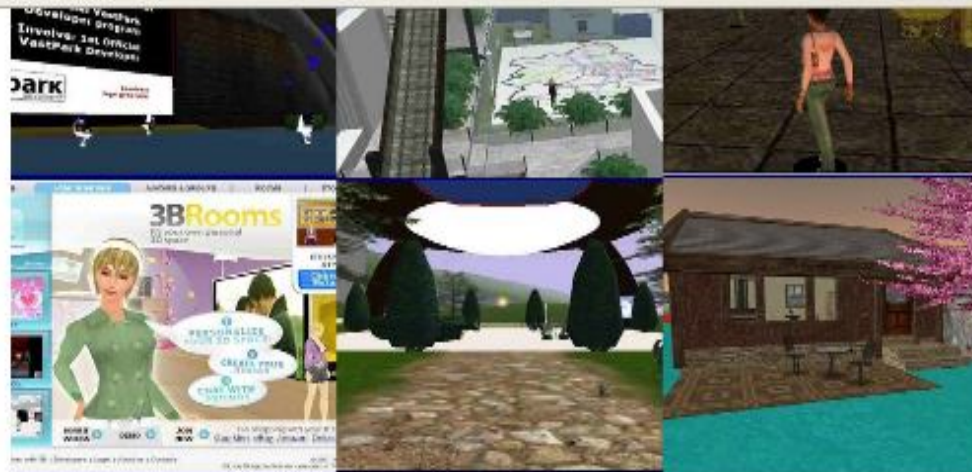
2

17th April Licensing Schemes

The CLA Licence for education:

- (1) Please view the PDF or Powerpoint version of Gursh Sangha's presentation.

Exemplar 05 – 3 day conference in 2008



There has clearly been an explosion in interest in the use of virtual worlds in education focused round Second Life (evidenced by the presentations and demonstrations at this year's Massively Multi-Learner event). Yet Second Life (SL) is not the only – and by no means the first – multi-user virtual world platform to be adapted for educational use. Here a very brief note is made of some of alternatives, supplemented with a list of online links.

Live Presentation & Discussion using "Dim Dim" : Tuesday 20 May, 3.15pm to 4.30pm

There will be a link to this live Dim Dim to session from 3.15pm on Tuesday.

 JOINING INSTRUCTIONS

-  Virtual Worlds for Education (in PPT format)
-  Virtual Worlds for Education (presentation in PDF format)
-  About Daniel Livingstone
-  Virtual Worlds in Education Discussion Forum
-  Handout
-  Link to WoW youtube
-  Chat log from live Dim Dim session


<http://www.dimdim.com/>

dimdim



Exemplar 06 – 1 day HE event 2008

Video introduction by Kevin Brace

 [Introduction \(video\) & workshop rationale](#)

Real time tools for learning

This live session will be conducted using DimDim



Dimdim Web Meeting Introduction to real time tools

-  [dimdim settings](#)
-  [DimDim joining instructions](#)
-  [Webcasting tools discussion forum](#)
-  [Webcasting tools resources](#)

2

Session 2: e-assessment. 11.00 > 12.00




Jo Richler : Skype Jo on : [jo.richler](#)

[Access Jo's presentation on slideshare](#)

[Discussion forum + supporting resources](#)

e-assessment discussion forum

-  [e-assessment discussion forum](#)
-  [e-assessment resources](#)



Reflections

- As a result of these experiences I worked on some webcasting protocols with others:
- http://wiki.rscwmsystems.org.uk/index.php/Synchronous_webcasting_tools
- Worked with Helen Walmsley to create a new model for the online sessions. Categorised into different sessions:
- <http://staffordshireuniversity.pbwiki.com/Collaborative+working+online>
- Using DimDim much more this year, not the Moodle plug in, just the web version.
- Running a 2009 online “conference”, with an additional f2f launch event



References

- <http://staffordshireuniversity.pbwiki.com/Collaborative+working+online>
- <http://crusldi1.staffs.ac.uk/bestpracticemodels>
- http://wiki.rscwmsystems.org.uk/index.php/Synchronous_webcasting_to_ols
- <http://wiki.rscwmsystems.org.uk/index.php/moodle>
- <http://phoebe-app.conted.ox.ac.uk/>
- <http://www2.napier.ac.uk/transform/index.htm>
- <http://wiki.rscwmsystems.org.uk/index.php/moodle>
- <http://en.wikipedia.org/wiki/Webcasting>
- <http://www.dimdim.com/>
- http://sourceforge.net/project/showfiles.php?group_id=176809 (dimdim Moodle plugin)
- <http://kev-brace.blogspot.com/2008/08/dimdim-ups-features-o.html>



Contact:

Kevin Brace.

HE Co-ordinator.

[JISC Regional Support Centre West Midlands](#), University of
Wolverhampton,

Technology Centre, Wolverhampton Science Park, Glaisher
Drive, Wolverhampton WV10 9RU

T: +44 (0)1902 518931

F: +44 (0)1902 824345

E: k.brace@wlv.ac.uk



- Access my range of web services from a new netvibes page

<http://www.netvibes.com/kevinbrace#main>